

CORNER RECORD
WARRICK COUNTY



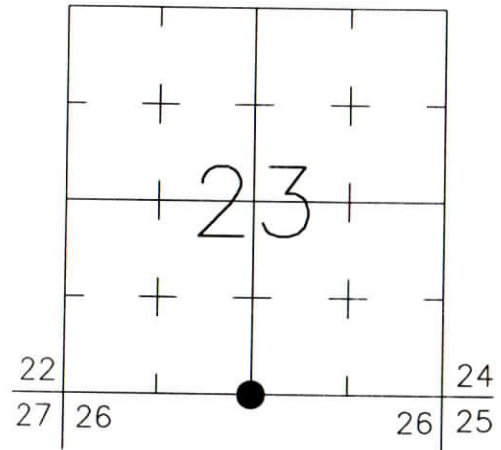
DESCRIPTION:
SOUTHWEST CORNER SOUTHEAST QUARTER
SECTION 23, T. 6 S., R. 9 W.
2nd PRINCIPAL MERIDIAN

WARRICK COUNTY SURVEYOR
KARAN HARGRAVE-BARNHILL

FOR NOTES ON CORNER HISTORY SEE REVERSE.

INDICATE CORNER REFERENCED:

MONUMENT TYPE: (See Analysis of Corner
SIZE: Position on Reverse)
DEPTH/HEIGHT:
REFERENCE TIE DRAWING:



STATE PLANE COORDINATE DATA:
INDIANA WEST ZONE, NAD 83 (1997)
U.S. SURVEY FEET

X ----
Y ----

COORDINATES ESTABLISHED BY:

APPROVED BY:

DATE:

REFERENCED BY:

APPROVED BY:

DATE:

DATE:

CORNER FILE CODE:
T6S-R9W-R-19

CORNER HISTORY:

CORNER FILE CODE:
T6S-R9W-R-19

ORIGINAL USPLS SURVEY: Corner established by Jacob Fowler, Dec. 20, 1805 "Post" (@39.90 ch/79.80 ch).

COUNTY SURVEYOR'S BOOKS: Book 1 P. 29: Isaac Adams WCS August 1, 1854 "Stone"

OTHER SURVEYS AND PLATS: Road plans for SR 66, INDOT (State Hwy. Comm.) Proj. 174(1) 1954, do not label a found corner monument, but show a P.I. (Iron Pin Lightly Buried) which appears to be labelled as "1/4 Section Corner" (the graphics leave some question as to whether there are one or two points shown).

The 1965 plat of Broadview Section "A" shows dimensions to the corner but does not identify a monument.

Location Control Route Survey for SR 66 (Doc. 1997R-007361) (section corner ties for this survey were performed in 1990); the P.I. monument from the 1954 route survey was not found (apparently destroyed by utility construction), but original P.O.S.T. monuments were found about 400' westerly. These were used to re-establish the P.I. location, where a 3/4" rebar with cap stamped "Wannemuehler" was set and referenced; the re-establishment uncertainty of the P.I. is estimated at +/- 0.5 feet. Based on the 1954 road plans, the P.I. was presumed to represent the 1/4-section corner. (Property ties to lot corners along the east side of Broadview Section A indicated a position approximately 0.6' south and 4.2' east of the P.I., however. Various methods of calculating the position using road centerlines shown on the subdivision plat indicated a position as much as 4' south and 6' east of the P.I.).

The plat of Peachwood of Warrick Place IV (Doc. 2001R-014982) shows a 5/8" I.P. marked Morley.

An ALTA/ACSM Land Title Survey by Danny Leek, dated June 7, 2002, shows a re-established corner position (using monuments along the west side of Broadview Section A) 3.19' E. & 2.53' N. of a found rebar with Morley and Assoc. Cap.

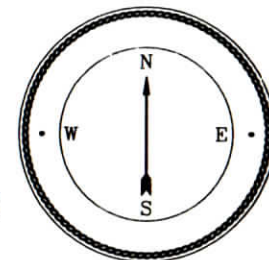
ANALYSIS OF CORNER POSITION: September, 2002: A steel T-post was found; neither the rebar with "Wannemuehler" cap marking the P.I. location nor the rebar with "Morley" cap shown on the Peachwood plat and the Danny Leek survey were found. Ties to S.R. 66 alignment points were used to calculate the former position of the Wannemuehler rebar (P.I.), being 3.2' north and 3.8' west of the T-post. Ties to rebars marking lot corners in the Peachwood subdivision were used to calculate the former position of the Morley rebar, being 0.2' east of the T-post. The re-established position shown on the Danny Leek survey would then be 2.5' north and 3.4' east of the T-post. The various methods of re-establishing the corner from South Broadview Section A, discussed above, would yield a position 1-3' north and 0-2' east of the T-post.

It is this surveyor's opinion that the P.I. location shown on the 1954 road plans was intended to represent the corner location, either being an iron pin found by Highway Commission surveyors or a position re-established and monumented by them using evidence available at the time, and that the re-established P.I. (3.2' north and 3.8' west of the T-post) may represent the best available evidence of the original corner location. However, most of the boundary survey documentation since 1965 indicates a position closer to the existing T-post.

No new monument was placed, and no reference ties were taken for the existing T-post. The above comments are offered as information for other surveyors evaluating this corner.

Perry E. Jones 7/28/03

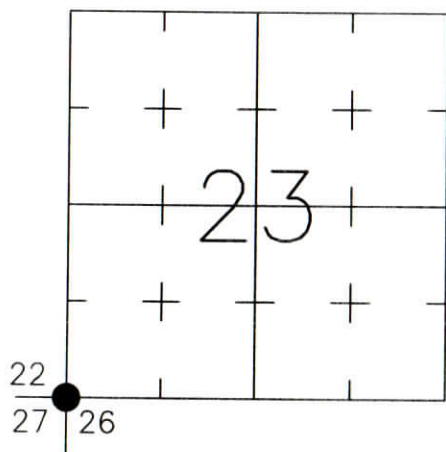
CORNER RECORD WARRICK COUNTY



DESCRIPTION:
 SOUTHWEST CORNER _____
 SECTION 23, T. 6 S., R. 9 W.
 2nd PRINCIPAL MERIDIAN

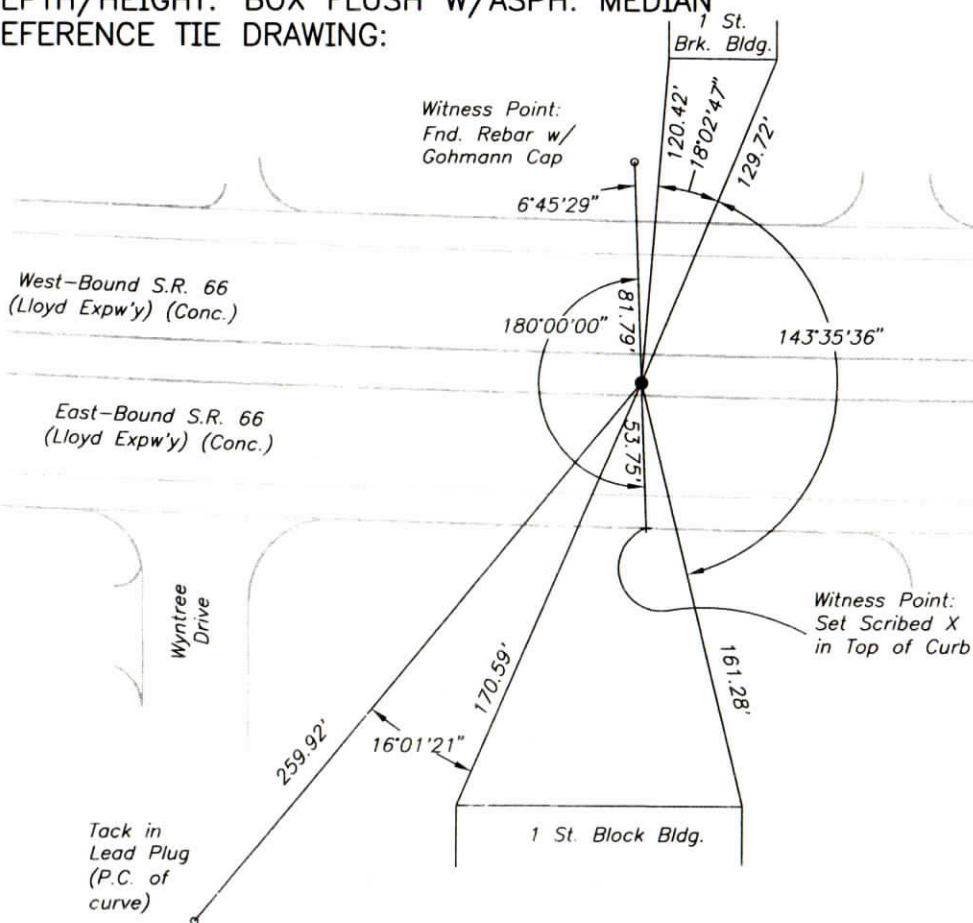
WARRICK COUNTY SURVEYOR
 JAMES NIEMEYER

INDICATE CORNER REFERENCED:



MONUMENT TYPE: IRON PIN (PUNCHED)
 SIZE: 1" DIA. (IN MONUMENT BOX)
 DEPTH/HEIGHT: BOX FLUSH W/ASPH. MEDIAN
 REFERENCE TIE DRAWING:

FOR NOTES ON CORNER HISTORY SEE REVERSE.



STATE PLANE COORDINATE DATA:
 INDIANA WEST ZONE, NAD 83 (1997)
 U.S. SURVEY FEET

X _____
 Y _____

COORDINATES ESTABLISHED BY:

APPROVED BY:

DATE:

REFERENCED BY: K.S.KLEIN/G.F.BERRY

DATE: 7/28/05

APPROVED BY: P.JONES, RLS#9600016

DATE: 7/29/05

CORNER FILE CODE:
 T6S-R9W-R-17

CORNER HISTORY:

CORNER FILE CODE:
T6S-R9W-R-17

ORIGINAL USPLS SURVEY: Corner established by Jacob Fowler, Dec. 18, 1805 "Post".

COUNTY SURVEYOR'S BOOKS: Book 1 P. 29: Isaac Adams WCS August 1, 1854 Stone"

OTHER SURVEYS AND PLATS: Road plans for SR 66, INDOT (State Hwy. Comm.) Proj. 179(1) 1948, do not show a corner monument, but show a P.I. (no curve) with stationing that matches the section line stationing. The P.I. is approx. 2' south of the road centerline as of the date of survey. The plans seem to imply (but do not specify) that the P.I. was intended to represent the section corner. Plans called for a Type "D" monument at the P.I. location.

"Corner Record" cards include references to the brass plug as taken from High Point Centre Sec. C and various other subdivisions. The brass plug has apparently been commonly accepted as the section corner.

Location Control Route Survey for SR 66 (Doc. 1997R-007361) (section corner ties for this survey were performed in 1990); the brass plug was tied in and referenced.

VERIFICATION OF CORNER POSITION: June 2002; Additional ties were made to the brass plug to aid in perpetuating the plug's position thru upcoming construction on S.R. 66.

~~July 2003; Construction work currently in progress along SR 66 will include removal of the existing pavement and monuments; construction plans call for the placement of a section corner monument.~~ Perry E. Jones 7/28/03

July 2005: The brass plug's former position was staked and straddle points set. The pin in monument box shown was placed (by others) in the asphalt median. The straddle points were then used to verify the pin's position and set a punch mark, and new reference ties were taken. Perry E. Jones 7/29/05

CORNER RECORD WARRICK COUNTY

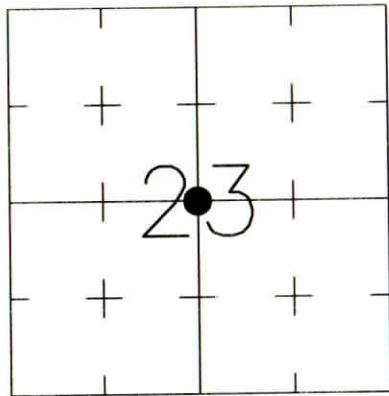


DESCRIPTION:
SOUTHWEST CORNER NORTHEAST QUARTER
SECTION 23, T. 6 S., R. 9 W.
2nd PRINCIPAL MERIDIAN

WARRICK COUNTY SURVEYOR
KARAN HARGRAVE-BARNHILL

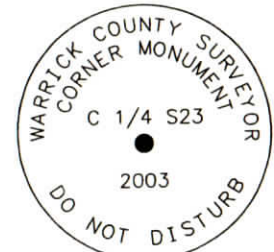
FOR NOTES ON CORNER HISTORY SEE REVERSE.

INDICATE CORNER REFERENCED:



MONUMENT TYPE: ALUM. DISK IN MON. BOX
SIZE: 3-1/4" DIAM.
DEPTH/HEIGHT: DISK 4" BELOW GRADE
REFERENCE TIE DRAWING:

NOTE: Alum. disk is inside a cast-iron monument box (10" diameter rim of box is flush with asphalt pavement.)



Stamping
on Disk

STATE PLANE COORDINATE DATA:
INDIANA WEST ZONE, NAD 83 (1997)
U.S. SURVEY FEET

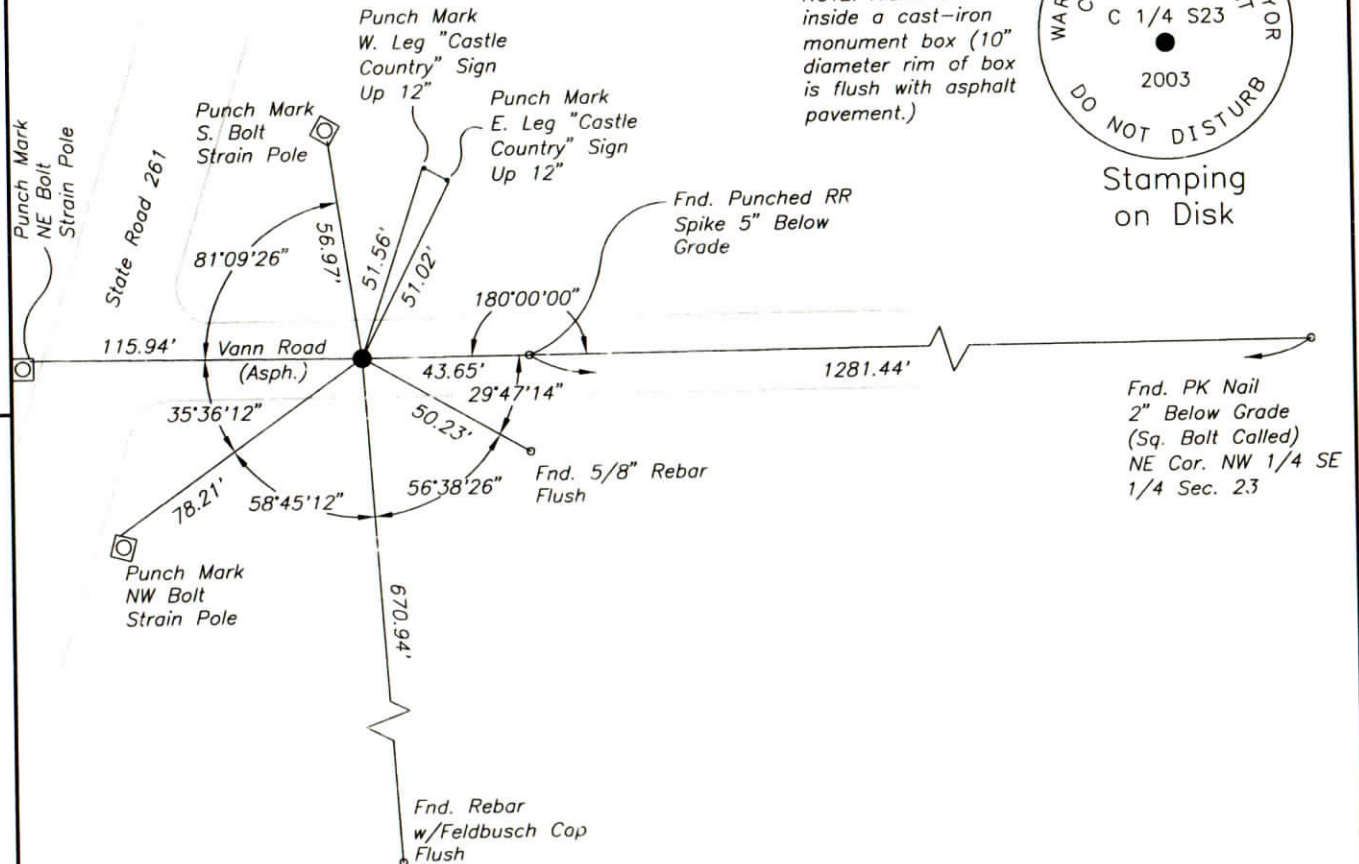
X ----

Y ----

COORDINATES ESTABLISHED BY:

APPROVED BY:

DATE:



REFERENCED BY: D.DREES/G.M.BURRESS

DATE: 10/31/03

APPROVED BY: P.JONES, RLS#9600016

DATE: 11/3/03

CORNER FILE CODE:
T6S-R9W-P-19

CORNER HISTORY:

CORNER FILE CODE:
T6S-R9W-P-19

ORIGINAL USPLS SURVEY: (Center of Section not monumented by USPLS Survey)

COUNTY SURVEYOR'S BOOKS: Book 1 P. 21: Isaac Adams WCS Dec. 7, 1853 "Wood Post"

OTHER SURVEYS AND PLATS: No Co. Surv. references, no recorded surveys/subdivisions found.

VERIFICATION OF CORNER POSITION: May, 2003: No monument was found marking the corner. Deeds to nearby properties were researched for references to the corner. A deed to the Warrick County School Corporation, recorded January 21, 1986, refers to a railroad spike having been set to mark the center of the section in a survey by Michael F. Feldbusch, RLS, dated December 30, 1985. Although the spike was not found, several other monuments were found as described in said deed description, their positions consistent with deed dimensions. The corner position was re-established using a PK Nail found marking the NE corner NW 1/4 SE 1/4 of Section 23 (square bolt called in deed) and a punched railroad spike found at a northwest corner of the School Corporation tract. October 31, 2003: the line between the PK and the spike was projected westerly the deed distance of 43.65' to set the aluminum disk in monument box shown.

Perry E. Jones 11/3/03

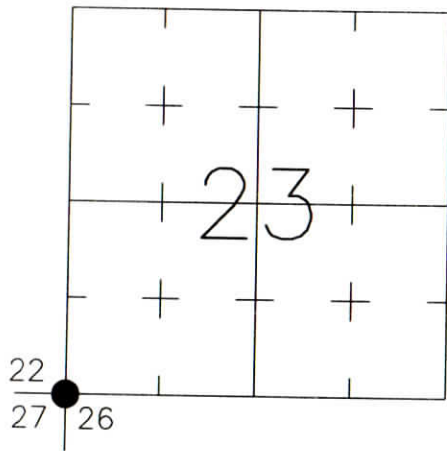
**CORNER RECORD
WARRICK COUNTY**



DESCRIPTION:
SOUTHWEST CORNER _____
SECTION 23, T. 6 S., R. 9 W.
2nd PRINCIPAL MERIDIAN

**WARRICK COUNTY SURVEYOR
KARAN HARGRAVE-BARNHILL**

INDICATE CORNER REFERENCED:



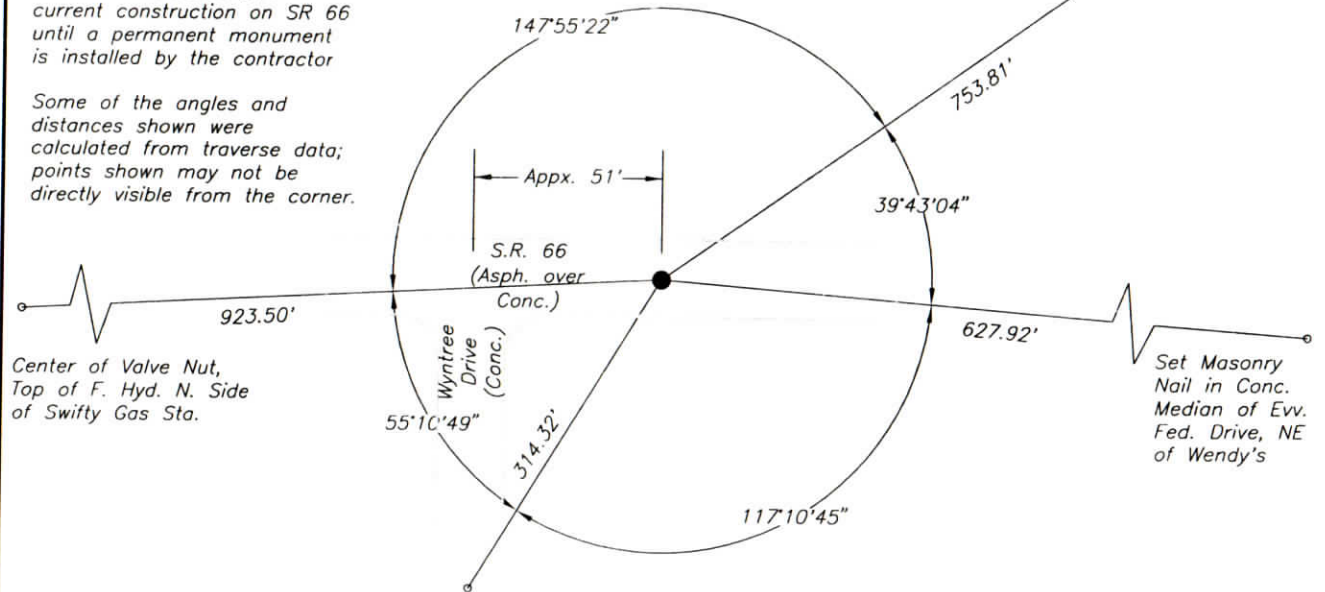
MONUMENT TYPE: BRASS PLUG
SIZE: 1" DIAM.
DEPTH/HEIGHT: 4" BELOW GRADE
REFERENCE TIE DRAWING:

FOR NOTES ON CORNER HISTORY SEE REVERSE.

Small RR Spk in asph. at base of front walk of vacant K-Mart, 59.24' SW of SE Cor. K-Mart Bldg.

NOTE: The ties shown are intended to aid in perpetuating the corner location thru current construction on SR 66 until a permanent monument is installed by the contractor

Some of the angles and distances shown were calculated from traverse data; points shown may not be directly visible from the corner.



Center of Valve Nut, Top of F. Hyd. N. Side of Swifty Gas Sta.

Set Masonry Nail in Conc. Median of Evv. Fed. Drive, NE of Wendy's

Tack in Lead Plug in Drill Hole (P.I. 1+080.928m Line "S-8-A" of INDOT Proj. STP-006-5(001))

STATE PLANE COORDINATE DATA:
INDIANA WEST ZONE, NAD 83 (1997)
U.S. SURVEY FEET

X _____
Y _____

COORDINATES ESTABLISHED BY:

APPROVED BY:

DATE:

REFERENCED BY: P.E.J., A.J.G.

APPROVED BY: P.JONES, RLS#9600016

DATE: 6/13/02

DATE: 7/28/03

CORNER FILE CODE:
T6S-R9W-R-17

CORNER HISTORY:

CORNER FILE CODE:
T6S-R9W-R-17

ORIGINAL USPLS SURVEY: Corner established by Jacob Fowler, Dec. 18, 1805 "Post".

COUNTY SURVEYOR'S BOOKS: Book 1 P. 29: Isaac Adams WCS August 1, 1854 Stone"

OTHER SURVEYS AND PLATS: Road plans for SR 66, INDOT (State Hwy. Comm.) Proj. 179(1) 1948, do not show a corner monument, but show a P.I. (no curve) with stationing that matches the section line stationing. The P.I. is approx. 2' south of the road centerline as of the date of survey. The plans seem to imply (but do not specify) that the P.I. was intended to represent the section corner. Plans called for a Type "D" monument at the P.I. location.

"Corner Record" cards include references to the brass plug as taken from High Point Centre Sec. C and various other subdivisions. The brass plug has apparently been commonly accepted as the section corner.

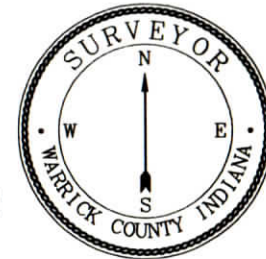
Location Control Route Survey for SR 66 (Doc. 1997R-007361) (section corner ties for this survey were performed in 1990); the brass plug was tied in and referenced.

VERIFICATION OF CORNER POSITION: June 2002; Additional ties were made to the brass plug to aid in perpetuating the plug's position thru upcoming construction on S.R. 66.

July 2003; Construction work currently in progress along SR 66 will include removal of the existing pavement and monuments; construction plans call for the placement of a section corner monument.

Perry E. Jones 7/28/03

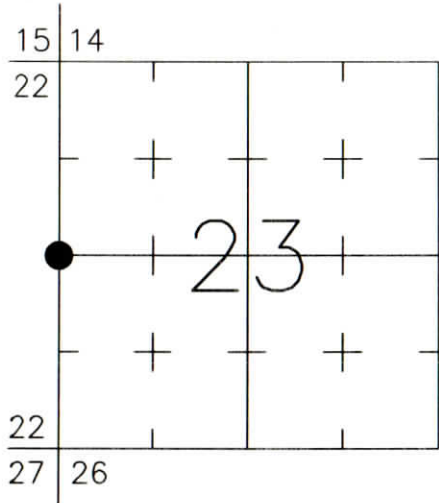
CORNER RECORD
WARRICK COUNTY



DESCRIPTION:
SOUTHWEST CORNER NORTHWEST QUARTER
SECTION 23, T. 6 S., R. 9 W.
2nd PRINCIPAL MERIDIAN

WARRICK COUNTY SURVEYOR
KARAN HARGRAVE-BARNHILL

INDICATE CORNER REFERENCED:



MONUMENT TYPE: RAILROAD SPIKE
SIZE:
DEPTH/HEIGHT: 10" BELOW PVMT. GRADE
REFERENCE TIE DRAWING:

FOR NOTES ON CORNER HISTORY SEE REVERSE.

STATE PLANE COORDINATE DATA:
INDIANA WEST ZONE, NAD 83 (1997)
U.S. SURVEY FEET

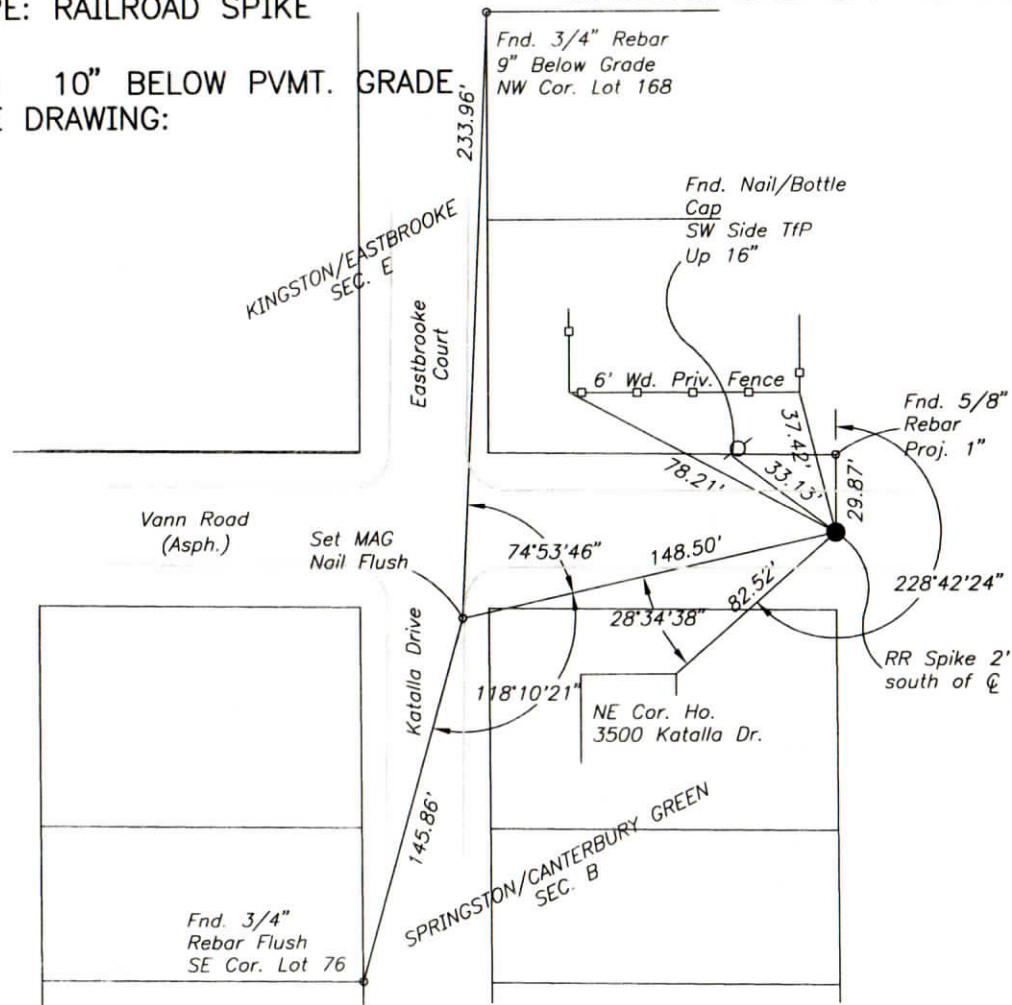
X ---

Y ---

COORDINATES ESTABLISHED BY:

APPROVED BY:

DATE:



REFERENCED BY: R.HARLAN/K.KLEIN

DATE: 9/3/02

APPROVED BY: P.JONES, RLS#9600016

DATE: 9/12/02

CORNER FILE CODE:
T6S-R9W-P-17

CORNER HISTORY:

CORNER FILE CODE:
T6S-R9W-P-17

ORIGINAL USPLS SURVEY: Corner established by Jacob Fowler, Dec. 20, 1805 "Post".

COUNTY SURVEYOR'S BOOKS: Book 1 P. 21: Isaac Adams WCS Dec. 7, 1853 "Wood Post"

Book 1 P. 125: John C. Frary WCS Nov. 4, 1859 "Both trees standing. Stake standing"

Book 1 P. 252: O.B.Pasco WCS Nov. 26, 1866 (Mon. not identified, mentions "old witness trees")"

OTHER SURVEYS AND PLATS: "Corner Record" Card shows a 1973 reference (monument not identified).

A 1-1/4" iron pin was tied in and referenced on the Location Control Route Survey for SR 66 (Doc. 1997R-007361). Section ties for this project were done in 1990.

1993 Plat of Springston/Canterbury Green Sec. B includes ties and references to the corner (Set 5/8" IP ??).

Plat of survey by James Q. Morley (Doc. 1996R-004748) shows a RR spike found 10" below grade.

VERIFICATION OF CORNER POSITION: September, 2002: The railroad spike shown was found in place. None of the reference objects from the 1973 Corner Record Card nor the plat of Springston/Canterbury Green Sec. B could be found. Measured distance from the spike to a rebar found at the SE corner of Lot 76 of Springston/Canterbury Green Sec. B matched plat dimensions within 0.05'; to a rebar at the NW corner of Lot 168 of Kingston/Eastbrooke Sec. E matched plat dimensions within 0.2' (although this plat does not specifically identify the subdivision corner as the 1/4 corner).

Perry E. Jones 9/12/02

CORNER RECORD
WARRICK COUNTY



DESCRIPTION:

SE CORNER SW¹/₄ NW¹/₄

SECTION 23, T. 6 S. R. 9 W.

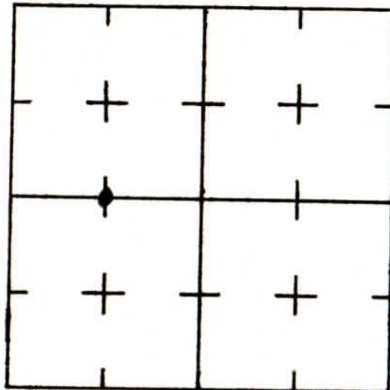
2nd PRINCIPLE MERIDIAN

WARRICK COUNTY SURVEYOR

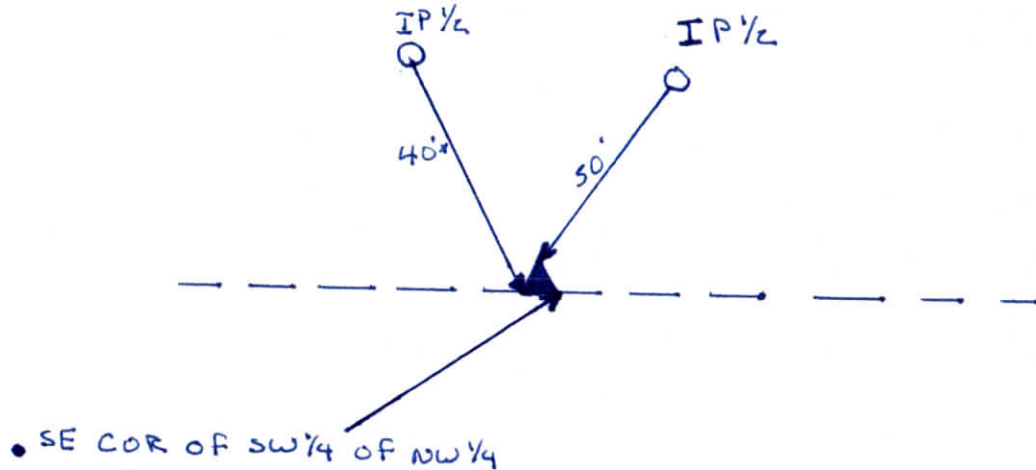
MICHAEL IRVIN

OLD Hickory VI

INDICATE CORNER REFERENCED



DESCRIBE CORNER REFERENCED



STATE PLANE COORDINATE DATA

INDIANA ZONE: WEST

X _____

Y _____

ESTABLISHED BY:

APPROVED BY

DATE

REFERENCED BY:

DATE

George S Ridgway

July 11, 1990

CORNER RECORD
WARRICK COUNTY

DESCRIPTION:

SE CORNER SW¹/₄ NW¹/₄

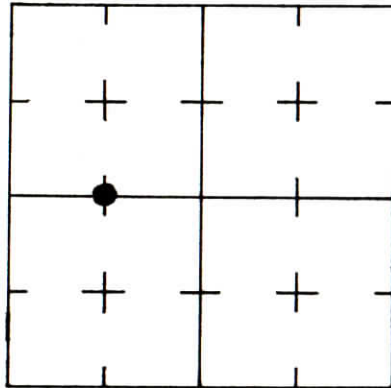
SECTION 23, T. 6 S. R. 9 W.

2nd PRINCIPLE MERIDIAN

WARRICK COUNTY SURVEYOR
KARAN HARGRAVE-BARNHILL

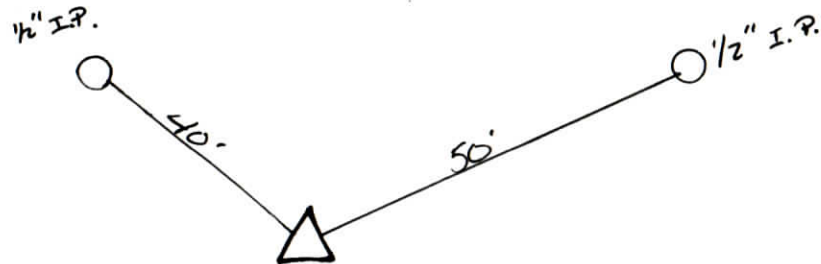


INDICATE CORNER REFERENCED



DESCRIBE CORNER REFERENCED

OLD HICKORY ESTATES



STATE PLANE COORDINATE DATA

INDIANA ZONE: WEST

X _____

Y _____

ESTABLISHED BY:

APPROVED BY

DATE

REFERENCED BY:

DATE

George S. Ridgway

5-25-90

CORNER RECORD
WARRICK COUNTY



DESCRIPTION: NE 1/4 NW 1/4
SE CORNER ~~SE 1/4~~ ~~NW 1/4~~

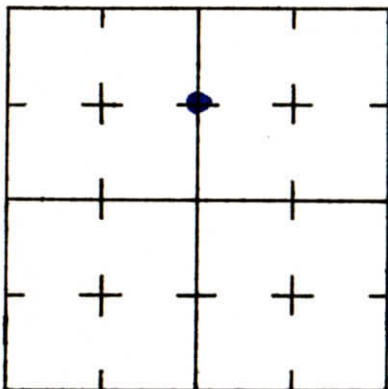
SECTION 23, T. 6 S. R. 9 W.

2nd PRINCIPLE MERIDIAN

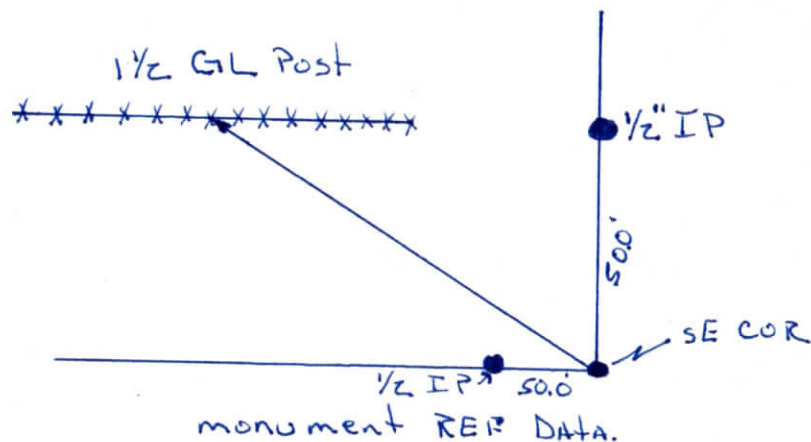
Old Hickory # 458

WARRICK COUNTY SURVEYOR
MICHAEL IRVIN

INDICATE CORNER REFERENCED



DESCRIBE CORNER REFERENCED



STATE PLANE COORDINATE DATA

INDIANA ZONE: WEST

X _____

Y _____

ESTABLISHED BY:

APPROVED BY

DATE

REFERENCED BY:

DATE

George Ridgway

July 3 1989

CORNER RECORD
WARRICK COUNTY



DESCRIPTION:

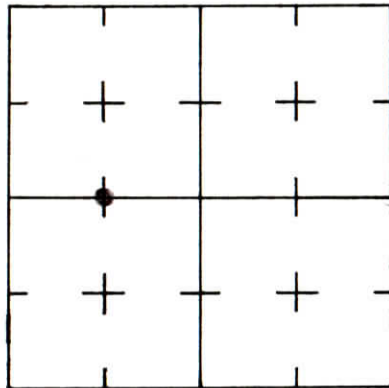
SW CORNER SE 1/4 SW 1/4

SECTION 23, T. 6 S. R. 9 W.

2nd PRINCIPLE MERIDIAN

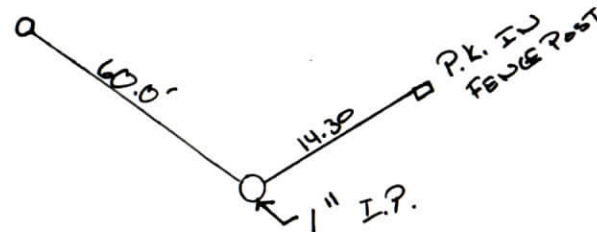
WARRICK COUNTY SURVEYOR
KARAN HARGRAVE-BARNHILL

INDICATE CORNER REFERENCED



DESCRIBE CORNER REFERENCED

OLD HICKORY ESTATES



STATE PLANE COORDINATE DATA

INDIANA ZONE: WEST

X _____

Y _____

ESTABLISHED BY:

APPROVED BY

DATE

REFERENCED BY:

DATE

RICHARD C. EIFLER

2-2-87

CORNER RECORD
WARRICK COUNTY



DESCRIPTION :

SW CORNER SW¹/₄ NW¹/₄

SECTION 23, T. 6 S. R. 9 W.

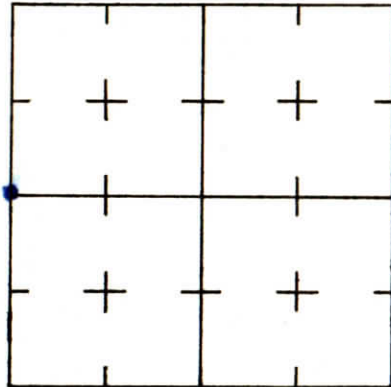
2nd PRINCIPLE MERIDIAN

Old Hickory Estates II

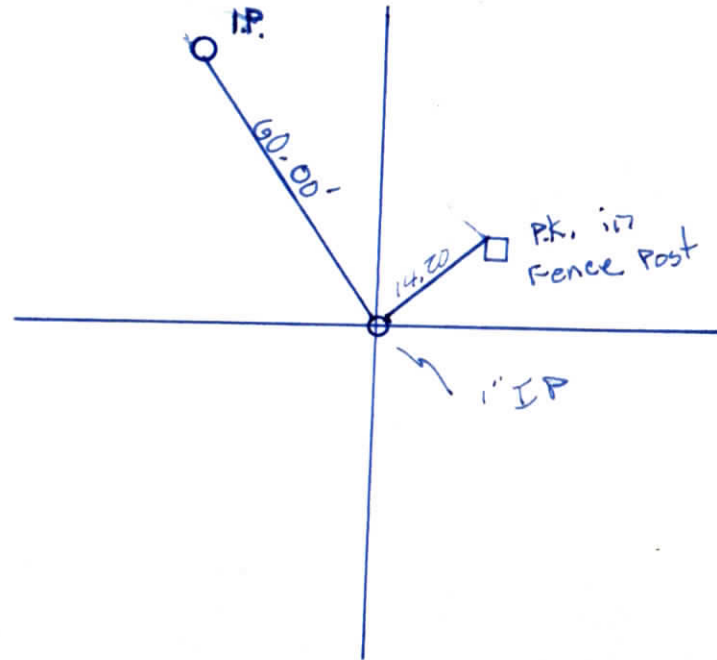
WARRICK COUNTY SURVEYOR

MICHAEL IRVIN

INDICATE CORNER REFERENCED



DESCRIBE CORNER REFERENCED



STATE PLANE COORDINATE DATA

INDIANA ZONE: WEST

X _____

Y _____

ESTABLISHED BY:

APPROVED BY

DATE

REFERENCED BY:

DATE

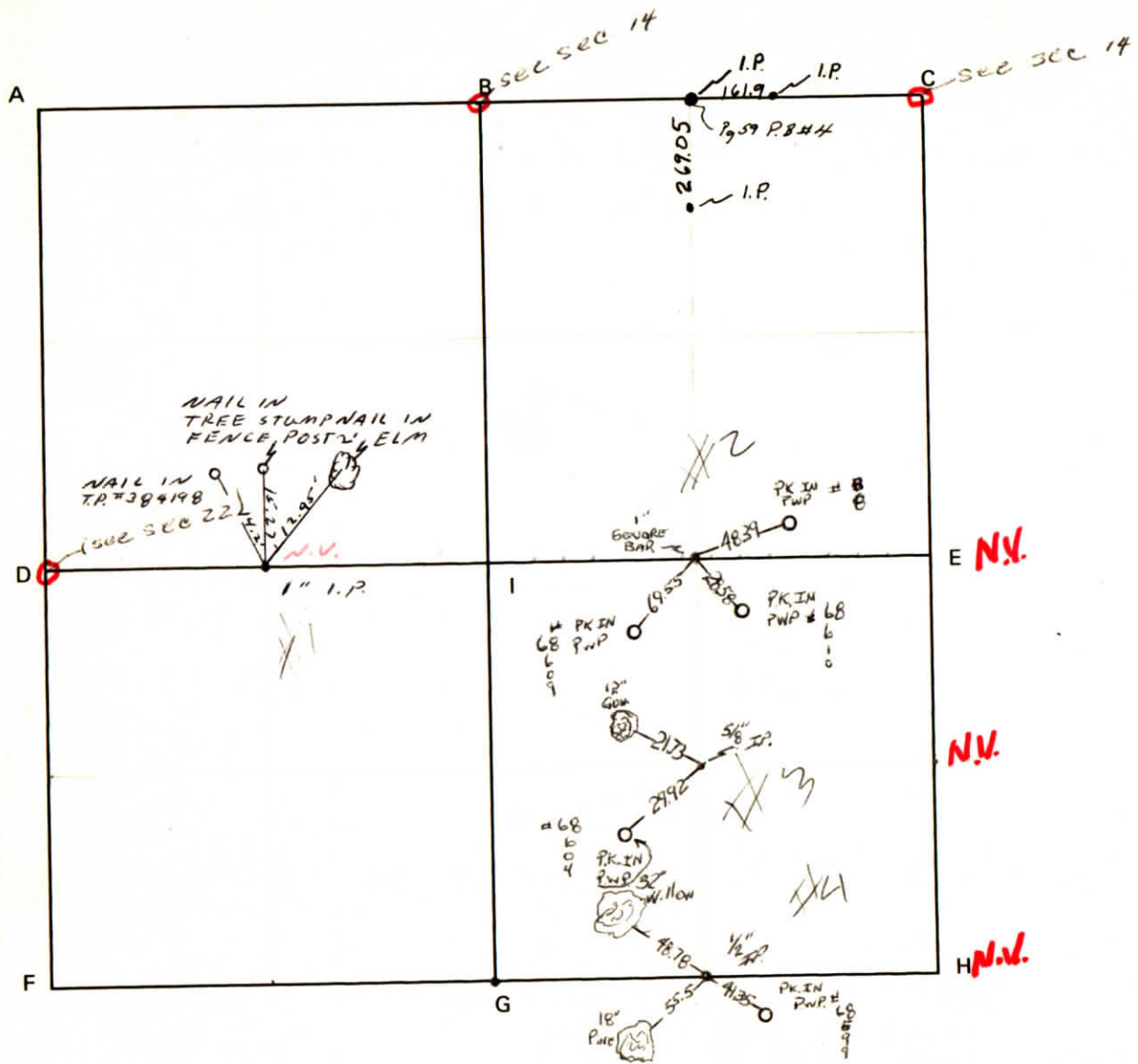
Richard C Eifler

March 11, 1987

1987

CORNER CODE SYSTEM
Warrick County

NOTES



N.V.

N.V.

N.V.

RECORD OF SECTION CORNERS

Warrick County

Section 23 Township 6 South Range 9 West 2nd Principle Meridian _____

Date	Cor	Location	Description of		Distance from Corner	Bearing from Corner (North Assumed)	Cond	Check By	Remarks
			Monument	Reference					
	A								
6-18-73 & 7-29-74	B	NE cor. NW $\frac{1}{4}$	3/4" re-bar	1) PK nail 2) PK nail 3) PK nail	14.5' 16.5' 29.3'	S 00° S 66° W N 10° W	good	GAT	Found in place In 40" maple In telephone pole #9 In PWP # 47902
7-29-74	C	NE cor NE $\frac{1}{4}$	1 1/2" iron pipe (6" below road)	1) 1" pin 2) PK nail 3) PK nail 4) PK nail	67.05' 84.1' 33.1' 64.4'	N 61° E S 82° E S 18° E S 74° W	fair	GAT	Found in place Lot pin set in conc. In telephone pole #8 In 1 1/4" pin oak In telephone pole #7
8-20-73 & 7-24-74	D	NW cor. SW $\frac{1}{4}$	1" iron pin	1) PK nail 2) PK nail 3) PK nail	16.8' 20.7' 17.2'	N 00° S 54° E S 10° E	good	GAT	Found in place In root of 36" catalpha In 36" soft maple In 36" soft maple

CORNER RECORD
WARRICK COUNTY



DESCRIPTION:

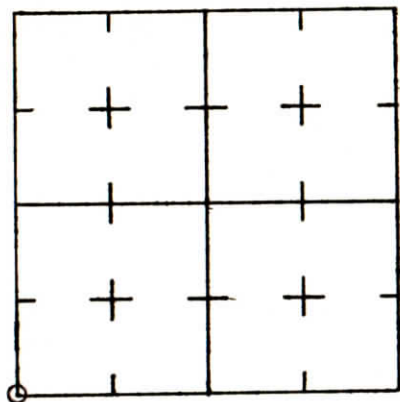
SW CORNER SW¹/₄

SECTION 24, T. 6 S. R. 9 W.

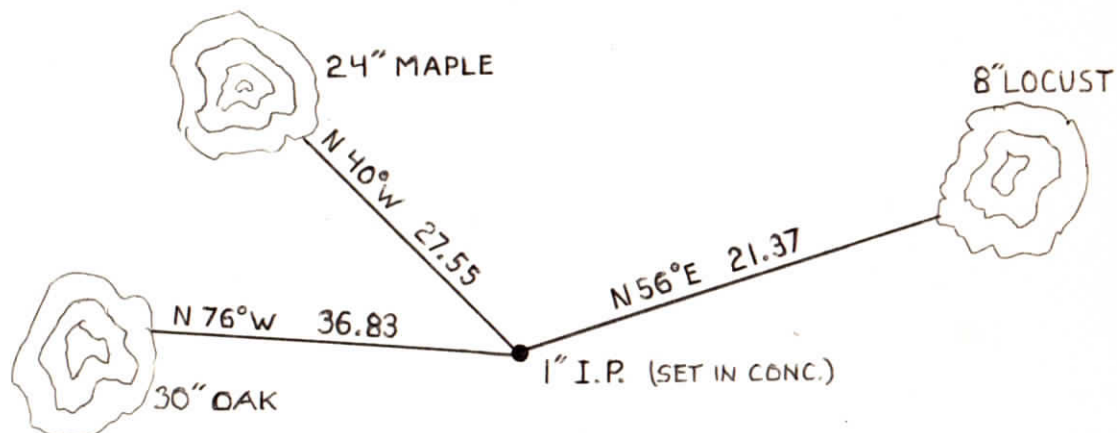
2nd PRINCIPLE MERIDIAN

WARRICK COUNTY SURVEYOR
MICHAEL IRVIN

INDICATE CORNER REFERENCED



DESCRIBE CORNER REFERENCED



STATE PLANE COORDINATE DATA

INDIANA ZONE: WEST

X 415,206.48

Y 173,617.92

ESTABLISHED BY:
L. HOFFMAN

APPROVED BY

DATE

REFERENCED BY:

DATE

**CORNER RECORD
WARRICK COUNTY**



DESCRIPTION :

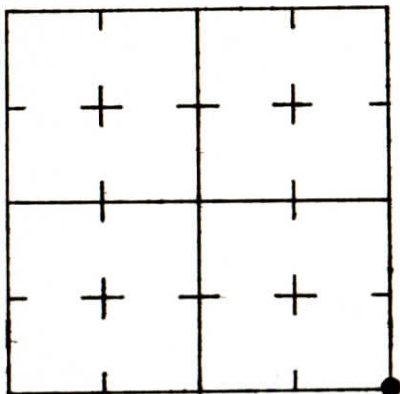
SE CORNER SE¹/₄

SECTION 24, T. 6 S. R. 9 W.

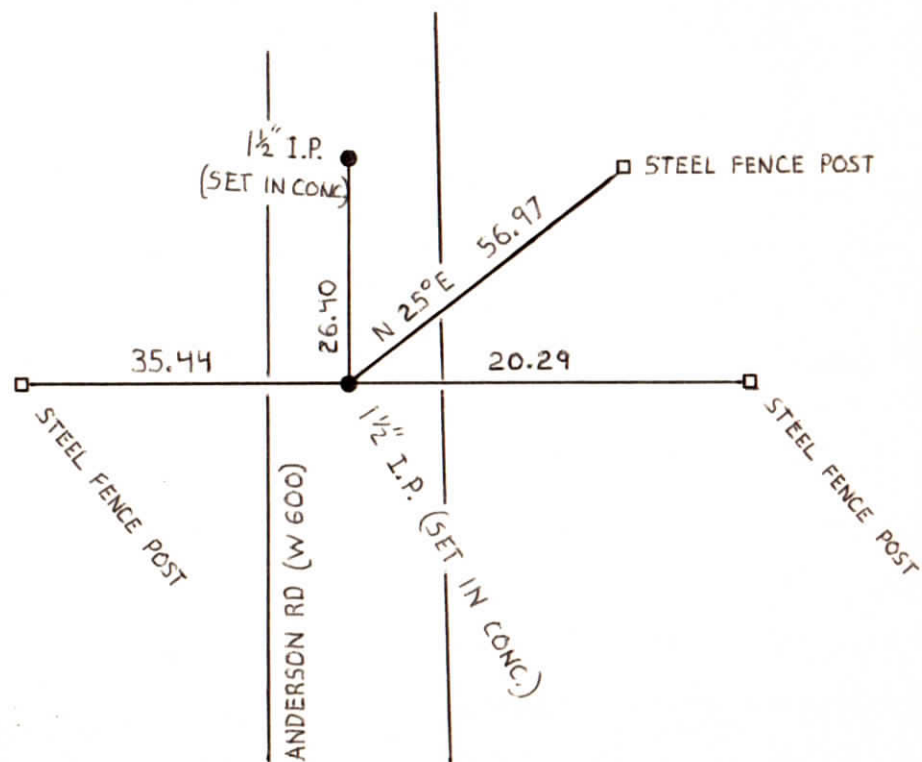
2nd PRINCIPLE MERIDIAN

**WARRICK COUNTY SURVEYOR
MICHAEL IRVIN**

INDICATE CORNER REFERENCED



DESCRIBE CORNER REFERENCED



STATE PLANE COORDINATE DATA

INDIANA ZONE: WEST

X 420,451.45

Y 173,580.39

ESTABLISHED BY:
L. HOFFMAN

APPROVED BY

DATE
4-25-1985

REFERENCED BY:

DATE

CORNER RECORD
WARRICK COUNTY

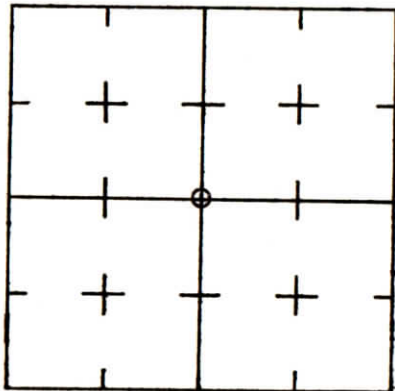
DESCRIPTION: NE¹/₄ SW¹/₄
NE CORNER CENTER OF SECTION

SECTION 24, T. 6 S. R. 9 W.
2nd PRINCIPLE MERIDIAN

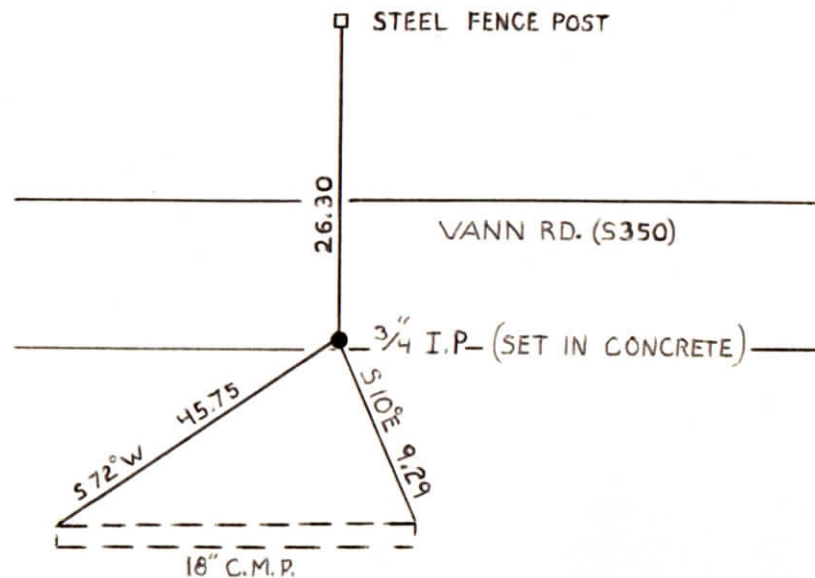
WARRICK COUNTY SURVEYOR
MICHAEL IRVIN



INDICATE CORNER REFERENCED



DESCRIBE CORNER REFERENCED



STATE PLANE COORDINATE DATA

INDIANA ZONE: WEST

X 417.848.33

Y 176.227.61

ESTABLISHED BY:
L. HOFFMAN

APPROVED BY

DATE
4-25-1985

REFERENCED BY:

DATE

**CORNER RECORD
WARRICK COUNTY**



DESCRIPTION:

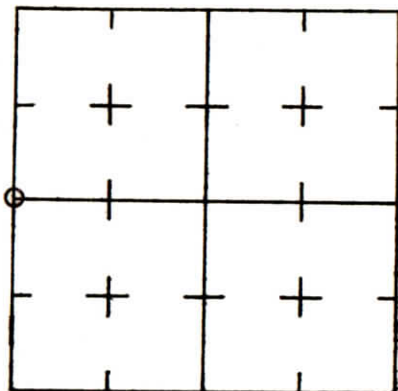
SW CORNER NW 1/4

SECTION 24, T. 6 S. R. 9 W.

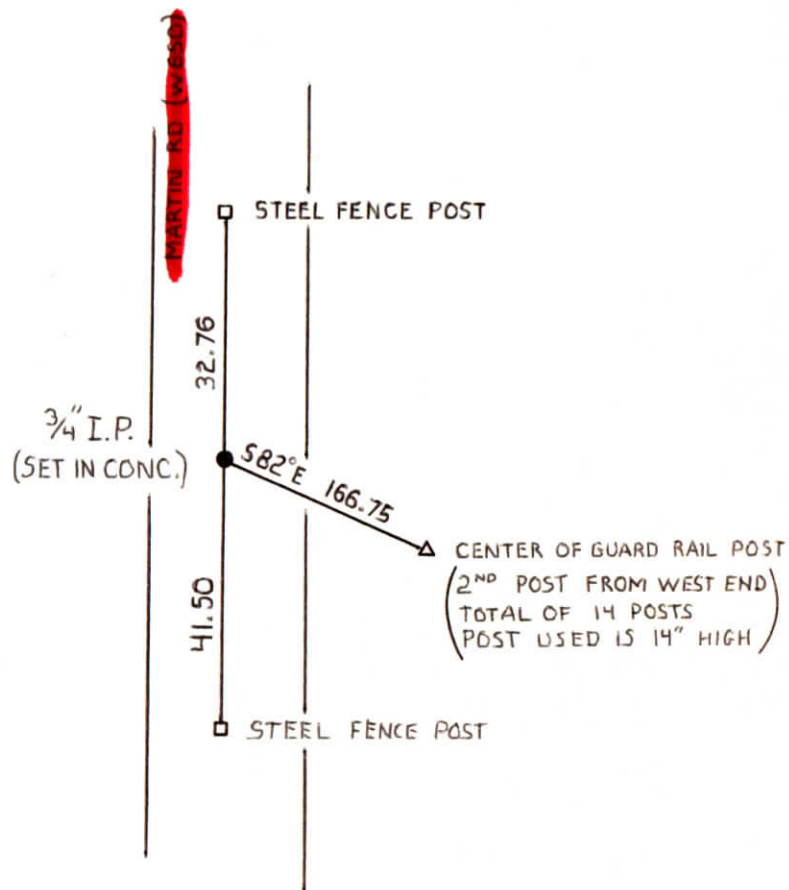
2nd PRINCIPLE MERIDIAN

**WARRICK COUNTY SURVEYOR
MICHAEL IRVIN**

INDICATE CORNER REFERENCED



DESCRIBE CORNER REFERENCED



STATE PLANE COORDINATE DATA

INDIANA ZONE: WEST

X 415,227.72

Y 176,242.70

ESTABLISHED BY:

L. HOFFMAN

APPROVED BY

DATE
4-25-1985

REFERENCED BY:

DATE

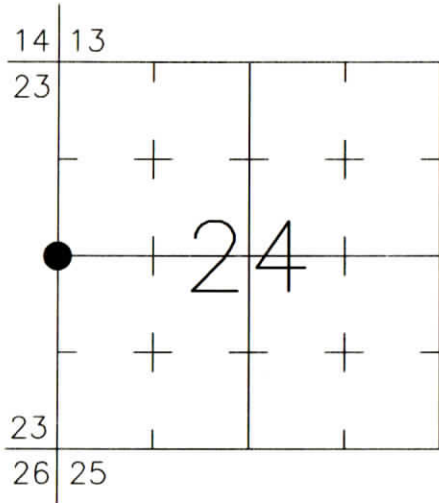
CORNER RECORD WARRICK COUNTY



DESCRIPTION:
SOUTHWEST CORNER NORTHWEST QUARTER
SECTION 24, T. 6 S., R. 9 W.
2nd PRINCIPAL MERIDIAN

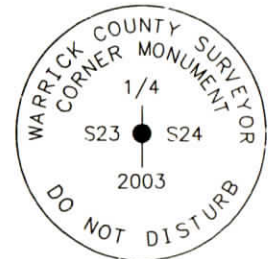
WARRICK COUNTY SURVEYOR
KARAN HARGRAVE-BARNHILL

INDICATE CORNER REFERENCED:



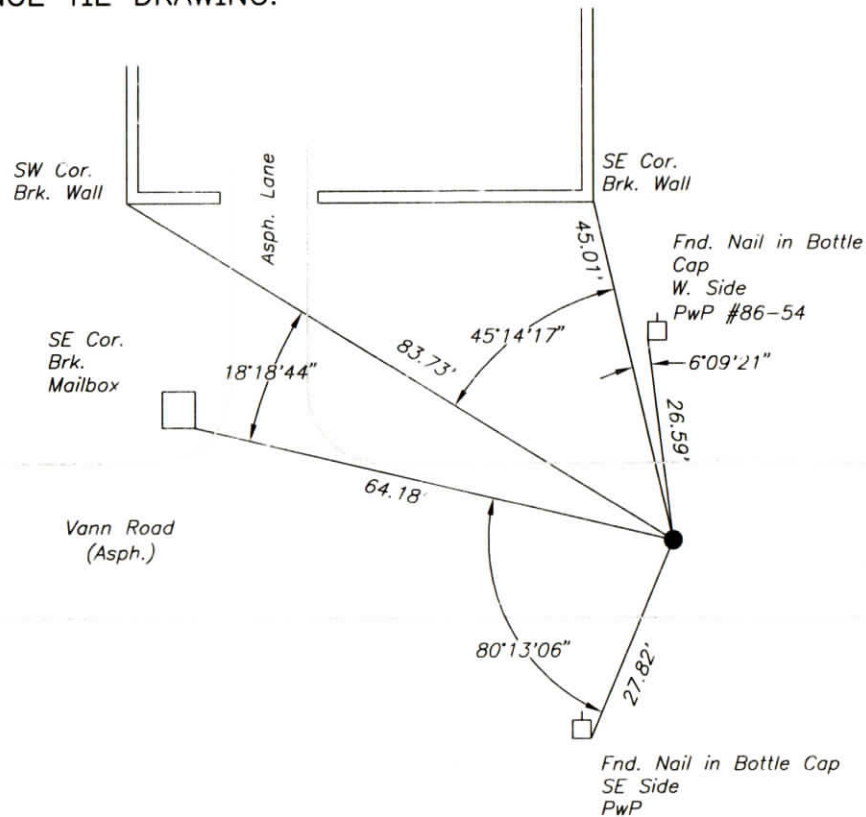
MONUMENT TYPE: ALUM. DISK IN MON. BOX
SIZE: 4" DIAM.
DEPTH/HEIGHT: DISK 4" BELOW ASPH. PVMT. GRADE
REFERENCE TIE DRAWING:

FOR NOTES ON CORNER HISTORY SEE REVERSE.



Stamping
on Disk

NOTE: Alum. disk is inside a cast-iron monument box (10" diam. rim is flush with asphalt pvmt.) Disk was set vertically over a found 3/4" iron pin in concrete.



STATE PLANE COORDINATE DATA:
INDIANA WEST ZONE, NAD 83 (1997)
U.S. SURVEY FEET

X ——— NAD 27 State Plane Coordinates previously established by L. Hoffman 4/25/1985:
X 415227.72
Y 176242.70
Y ——— (Taken from previous "Corner Record" card, not checked)

COORDINATES ESTABLISHED BY:

APPROVED BY:

DATE:

REFERENCED BY: D.DREES/C.BINKLEY DATE: 8/29/02
DISK/MON. BOX SET 10/29/03 D.DREES/G.M.BURRESS
APPROVED BY: P.JONES, RLS#9600016 DATE: 10/31/03

CORNER FILE CODE:
T6S-R9W-P-21

CORNER HISTORY:

CORNER FILE CODE:
T6S-R9W-P-21

ORIGINAL USPLS SURVEY: Corner established by Jacob Fowler, Dec. 20, 1805 "Post".

COUNTY SURVEYOR'S BOOKS: Book 4 P. 11: C. Warren Abbott WCS April 2, 1946 "Iron pipe" (12" Bl. Oak 24'N, Stakes set 208.7' W & 417.4' N)

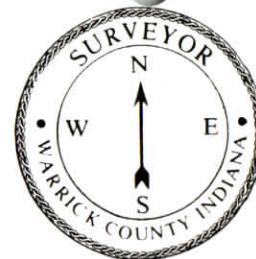
OTHER SURVEYS AND PLATS: "Corner Record" card shows reference to a 3/4" I.P. (set in concrete) dated 4/25/1985 which includes State Plane (1927) coordinates by L. Hoffman.

1994 INDOT survey (K.E. Jackson) tied in and referenced a 5/8" rebar 11" below grade. Mr. Jackson's survey report states that the position agreed with County Surveyor's ties.

VERIFICATION OF CORNER POSITION: August, 2002: The 3/4" iron pin in concrete was found in place, 13" below asphalt grade. The position agreed with reference ties from the 1994 INDOT survey. A railroad spike (punched) was set vertically over the iron pin in asphalt patching material. October, 2003: The railroad spike was removed; a cast-iron monument box was constructed, and the aluminum disk shown was placed vertically over the 3/4" iron pin.

Perry E. Jones 10/31/03

CORNER RECORD
WARRICK COUNTY



DESCRIPTION:

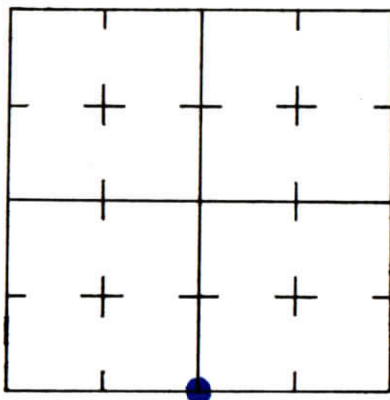
SE CORNER SE 1/4 SW 1/4

SECTION 24, T. 6 S. R. 9 W.

2nd PRINCIPLE MERIDIAN

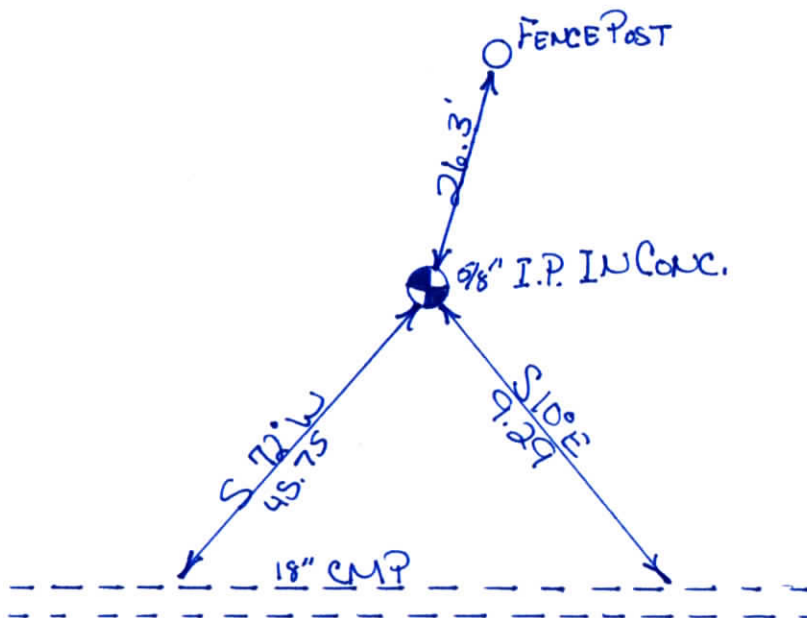
WARRICK COUNTY SURVEYOR
KARAN HARGRAVE-BARNHILL

INDICATE CORNER REFERENCED



DESCRIBE CORNER REFERENCED

HIGHLAND HILLS SUB



STATE PLANE COORDINATE DATA

INDIANA ZONE: WEST

X _____

Y _____

ESTABLISHED BY:

APPROVED BY

DATE

REFERENCED BY:

DATE

ALBERT K. HOLTZ

4-2-87

CORNER RECORD
WARRICK COUNTY



DESCRIPTION :

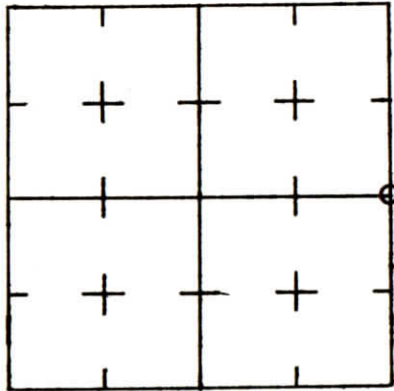
NE CORNER SE 1/4

SECTION 24, T. 6 S. R. 9 W.

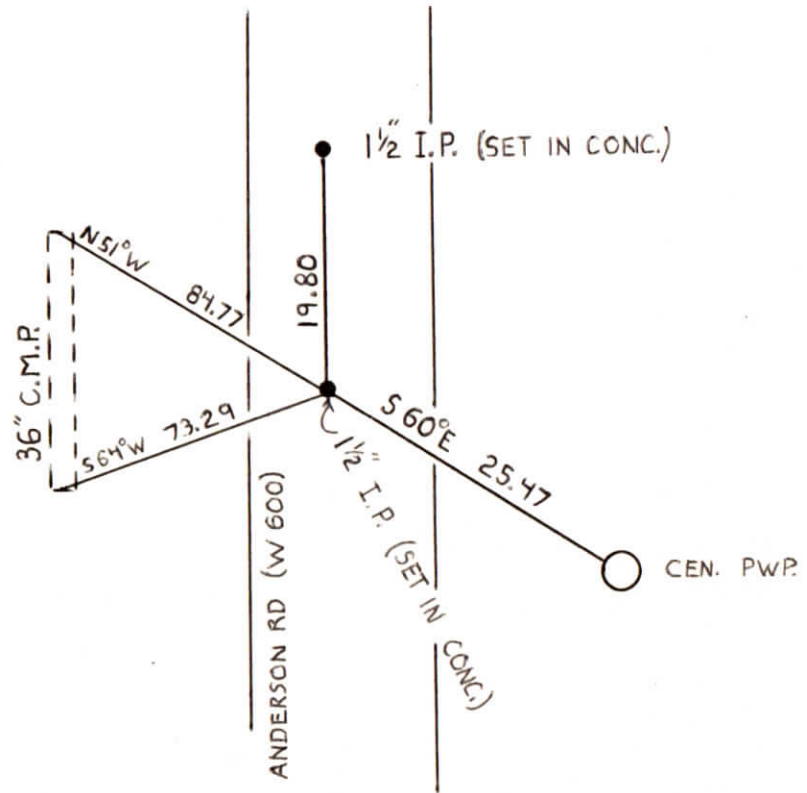
2nd PRINCIPLE MERIDIAN

WARRICK COUNTY SURVEYOR
MICHAEL IRVIN

INDICATE CORNER REFERENCED



DESCRIBE CORNER REFERENCED



STATE PLANE COORDINATE DATA

INDIANA ZONE: WEST

X 420,466.07

Y 176.218.30

ESTABLISHED BY:
L. HOFFMAN

APPROVED BY

DATE
4-25-1985

REFERENCED BY:

DATE

**CORNER RECORD
WARRICK COUNTY**



DESCRIPTION :

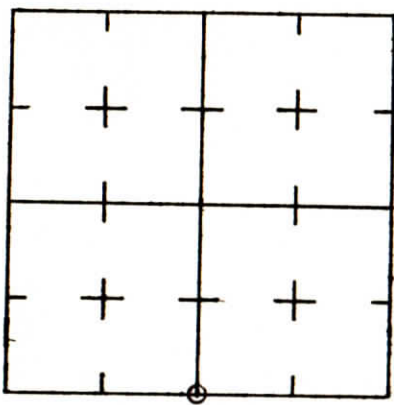
SE CORNER SW¹/₄

SECTION 24, T. 6 S. R. 9 W.

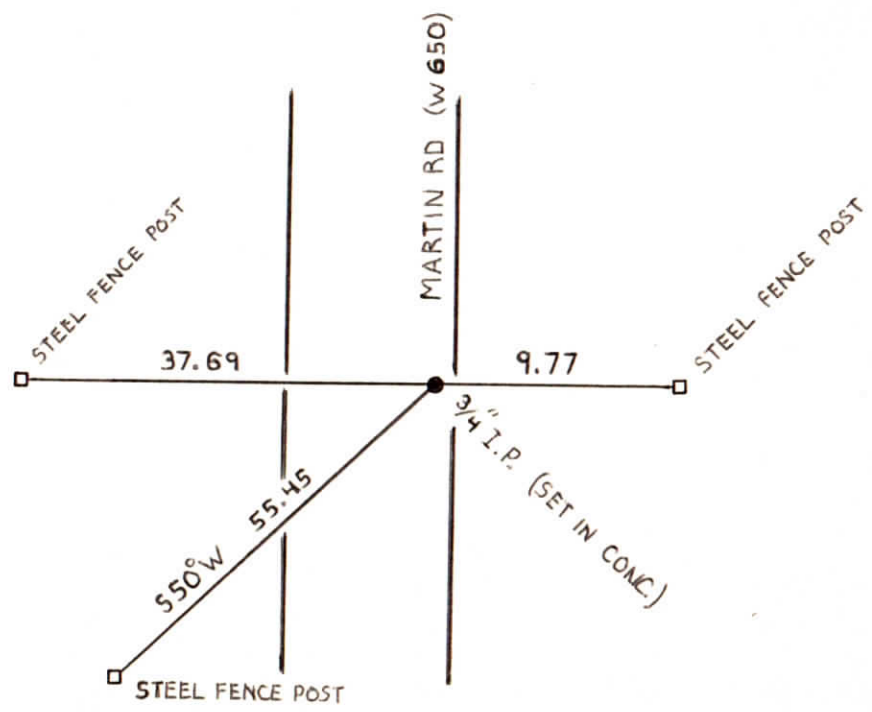
2nd PRINCIPLE MERIDIAN

**WARRICK COUNTY SURVEYOR
MICHAEL IRVIN**

INDICATE CORNER REFERENCED



DESCRIBE CORNER REFERENCED



STATE PLANE COORDINATE DATA

INDIANA ZONE: WEST

X 417,822.18

Y 173,590.77

ESTABLISHED BY:
L. HOFFMAN

APPROVED BY

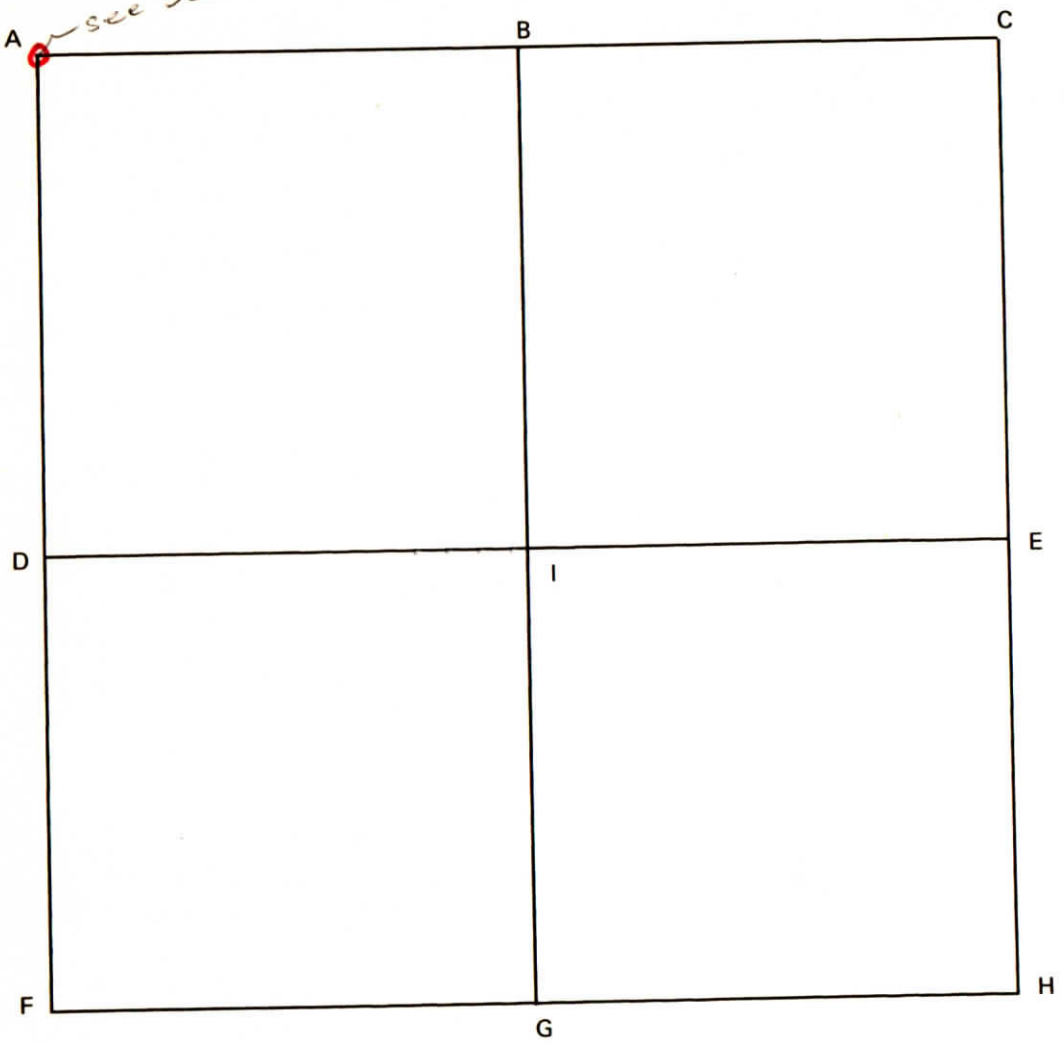
DATE
4-25-1985

REFERENCED BY:

DATE

CORNER CODE SYSTEM
Warrick County

see sec 14



NOTES

RECORD OF SECTION CORNERS

Warrick County

Section 24 Township 6 South Range 9 West 2nd Principle Meridian _____

Date	Cor	Location	Description of		Distance from Corner	Bearing from Corner (North Assumed)	Cond	Check By	Remarks
			Monument	Reference					
7-29-74	A	NW cor. NW $\frac{1}{4}$	1 $\frac{1}{2}$ " iron pipe (6" below road)	1) 1" pin 2) PK nail 3) PK nail 4) PK nail	67.05' 84.1' 33.1' 64.4'	N 61° E S 82° E S 18° E S 74° W	fair	GAT	Found in place Lot pin set in conc. In telephone pole #8 In 1 1/2" pin oak In telephone pole #7

**CORNER RECORD
WARRICK COUNTY**

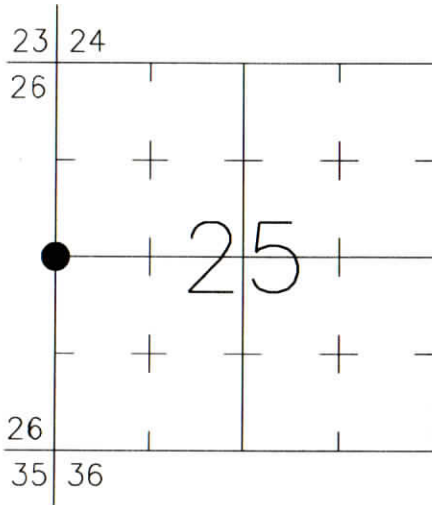


DESCRIPTION:
SOUTHWEST CORNER _____
SECTION 25, T. 6 S., R. 9 W.
2nd PRINCIPAL MERIDIAN

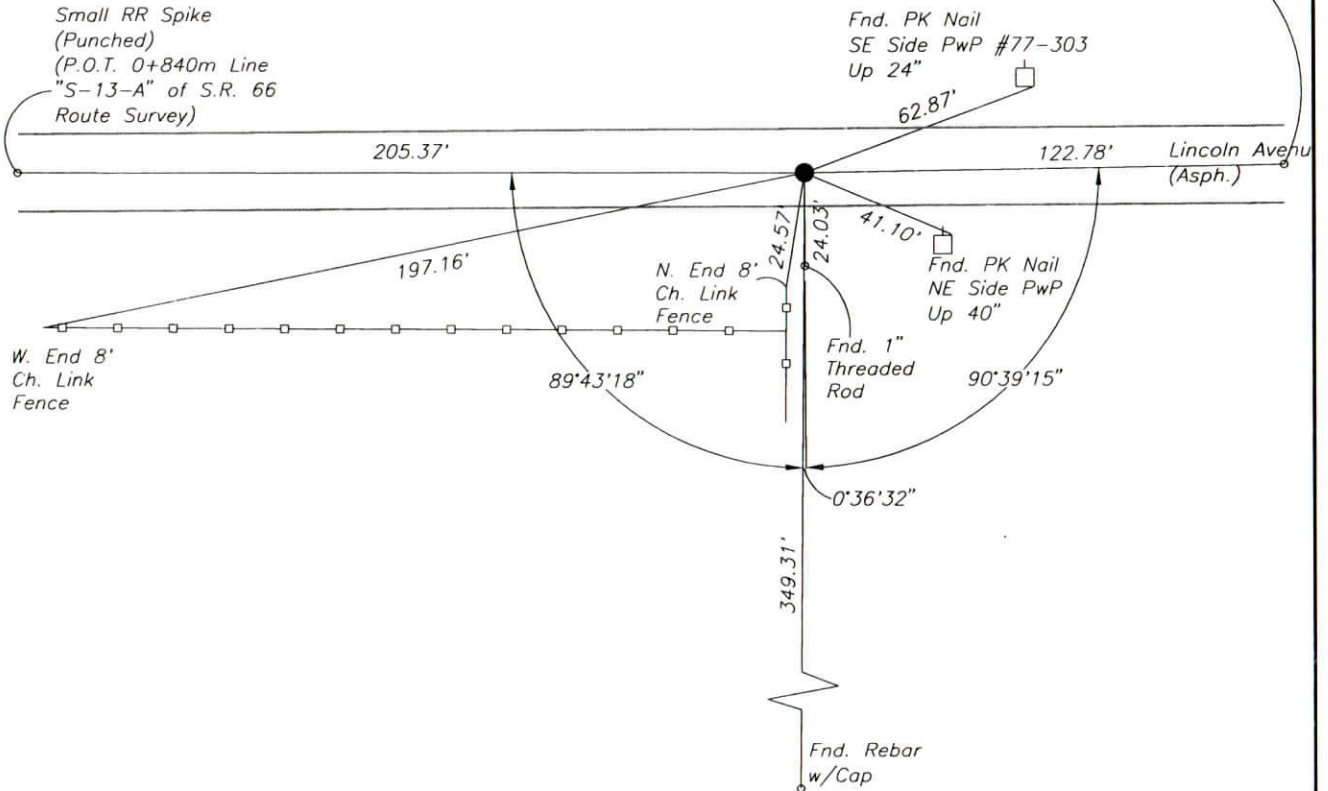
**WARRICK COUNTY SURVEYOR
JAMES NIEMEYER**

FOR NOTES ON CORNER HISTORY SEE REVERSE.

INDICATE CORNER REFERENCED:



MONUMENT TYPE: REBAR
SIZE: 1/2" DIA.
DEPTH/HEIGHT: 2" BELOW ASPH. GRADE
REFERENCE TIE DRAWING:



STATE PLANE COORDINATE DATA:
INDIANA WEST ZONE, NAD 83 (1997)
U.S. SURVEY FEET

X ---

Y ---

COORDINATES ESTABLISHED BY:

APPROVED BY:

DATE:

REFERENCED BY: D.DREES/C.BINKLEY

APPROVED BY: P.JONES, RLS#9600016

DATE: 8/28/02

DATE: 9/3/02

Rev.: 9/9/05 Section Number corrected. P.E.J.

CORNER FILE CODE:
T6S-R9W-T-21

CORNER HISTORY:

CORNER FILE CODE:
T6S-R9W-T-21

ORIGINAL USPLS SURVEY: Corner established by Jacob Fowler, Dec. 18, 1805 "Post".

COUNTY SURVEYOR'S BOOKS: Book 1 P. 29: Isaac Adams WCS August 1, 1854 "Stone".

Book 1 P. 218: O.B.Pasco WCS March 2, 1865 "Wood Post by Former Surveyor".

OTHER SURVEYS AND PLATS: "Corner Code System" card includes an undated reference to a 1/2" IP.

Location Control Route Surveys for SR 66 (Docs. 1997R-007360) (section corner ties performed in 1991) show a 1/2" rebar, reasonably consistent with county reference ties and deed dimensions to nearby property corner monuments.

VERIFICATION OF CORNER POSITION: The 1/2" rebar was found in place, and checked against the county reference ties and SR 66 survey.

Perry E. Jones 9/3/02

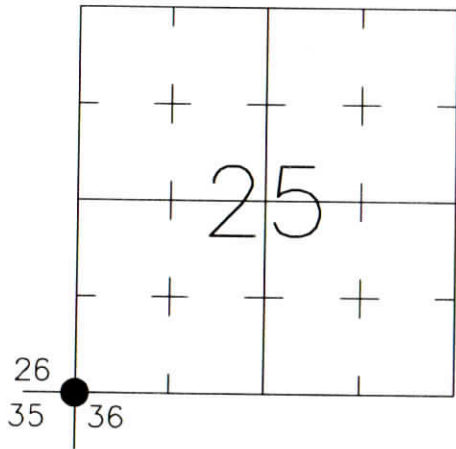
CORNER RECORD
WARRICK COUNTY



DESCRIPTION:
SOUTHWEST CORNER _____
SECTION 25, T. 6 S., R. 9 W.
2nd PRINCIPLE MERIDIAN

WARRICK COUNTY SURVEYOR
KARAN HARGRAVE-BARNHILL

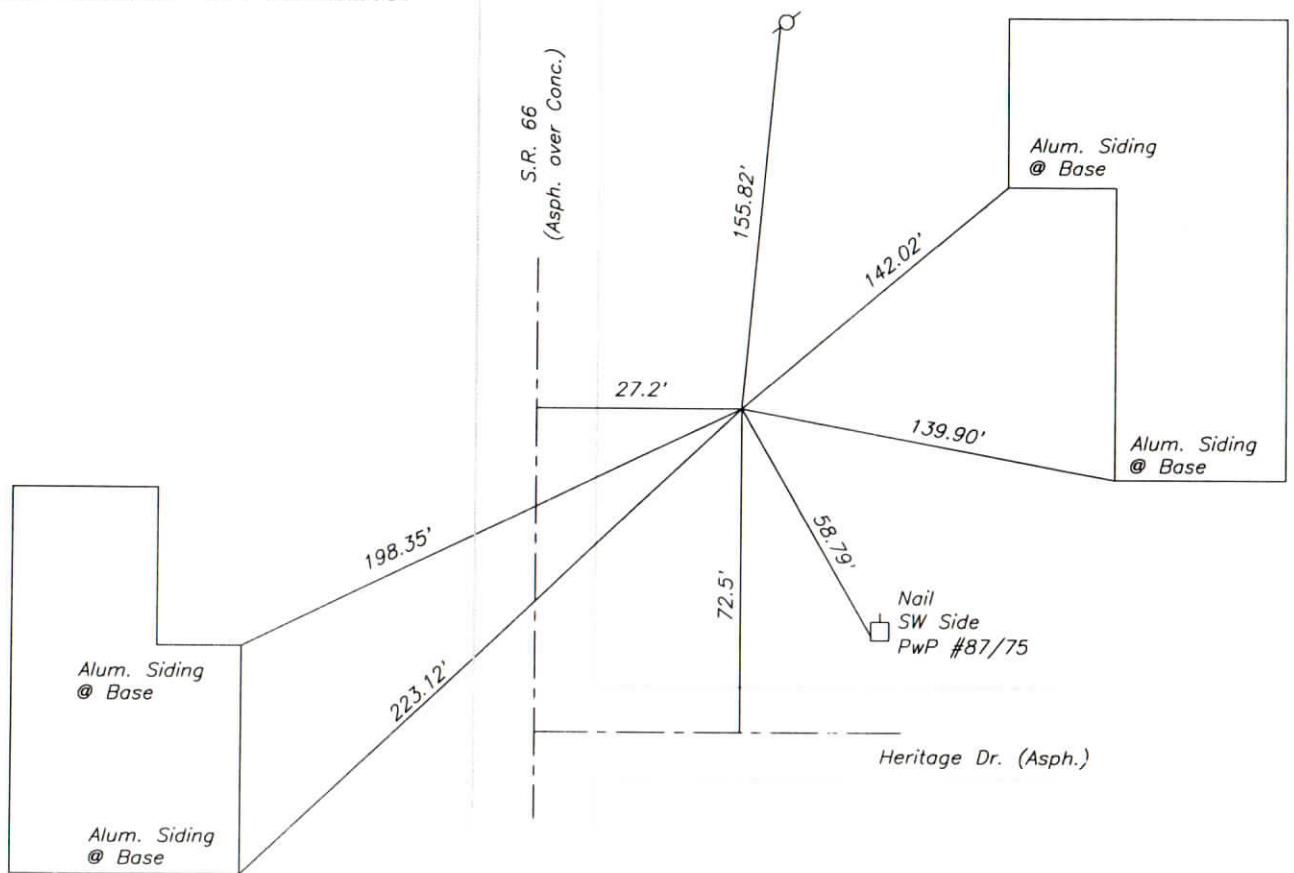
INDICATE CORNER REFERENCED:



MONUMENT TYPE: BRASS PIN IN CONC.
~~SIZE:~~ (INDOT TYPE C MONUMENT)
DEPTH/HEIGHT: 18" BELOW GRADE
REFERENCE TIE DRAWING:

FOR NOTES ON CORNER HISTORY SEE REVERSE.

PK Nail
W. Side
Tele. Pole
Up 4"



STATE PLANE COORDINATE DATA:
INDIANA WEST ZONE, NAD 83 (1997)
U.S. SURVEY FEET

X _____

Y _____

COORDINATES ESTABLISHED BY:

APPROVED BY:

DATE:

REFERENCED BY: P.JONES/G.M.BURRESS

DATE: 8/14/95

APPROVED BY: P.JONES, RLS#9600016

DATE: 9/27/02

CORNER FILE CODE:
T6S-R9W-V-21

CORNER HISTORY:

CORNER FILE CODE:
T6S-R9W-V-21

ORIGINAL USPLS SURVEY: Corner established by Jacob Fowler, Dec. 18, 1805 "Post".

COUNTY SURVEYOR'S BOOKS: Book 1 P. 29: Isaac Adams WCS August 1, 1854 "Stone".

Book 1 P. 218: O.B.Pasco WCS March 2, 1865 "Wood Post by Former Surveyor".

OTHER SURVEYS AND PLATS: "Corner Code System" card shows undated notation "Stone 28' east of centerline".

Road plans for SR 66, INDOT (State Hwy. Comm.) Proj. 174(1) 1954, give a station and offset to the section corner (do not identify a found monument) and call for a Type "C" monument to be set (30' east of proposed centerline).

The 1986 plat of Heritage Place Fifth Addition shows ties to the section corner (monument not identified).

Location Control Route Survey for SR 66 (Doc. 1997R-007360) (section corner ties performed in 1994-1995); a Type "C" monument was found 18" below grade, approx. 27' east of the 1991 highway centerline.

VERIFICATION OF CORNER POSITION: The SR 66 survey (Doc. 1997R-007360) included ties to lot corners in Heritage Place Fifth Addition, which agreed within 0.3' of the monument position. The reference ties shown are taken from said route survey. See Doc. 1997R-007360 for nearby property corners which serve as additional references.

Perry E. Jones 9/27/02

CORNER RECORD
WARRICK COUNTY

DESCRIPTION: ~~Center of Section~~

SE CORNER SE 1/4 NW 1/4

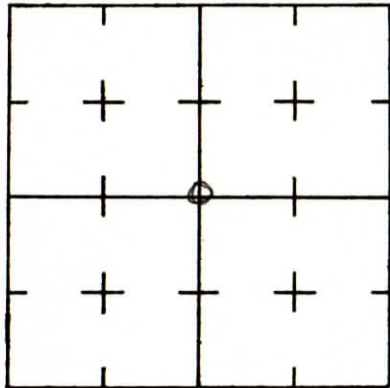
SECTION 25, T. 6 S. R. 9 W.

2nd PRINCIPLE MERIDIAN

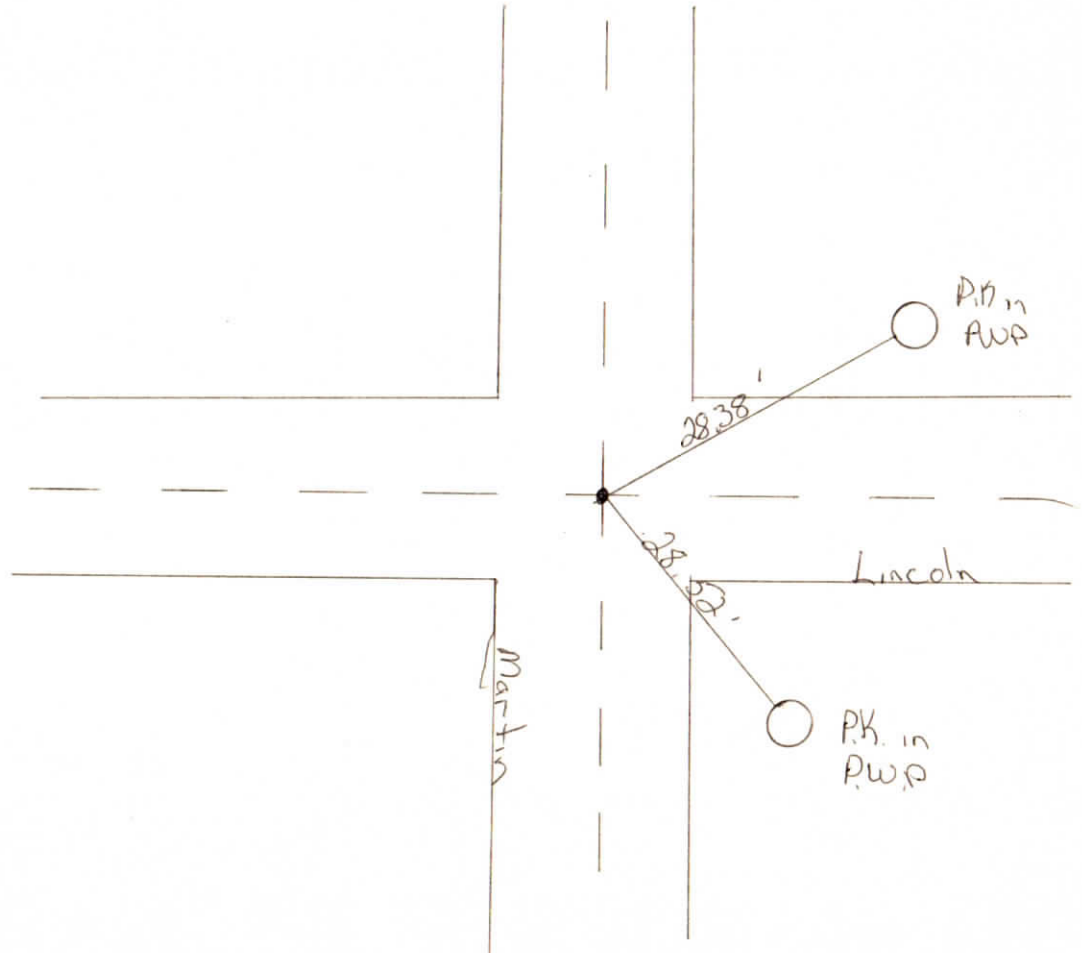
WARRICK COUNTY SURVEYOR
MICHAEL IRVIN



INDICATE CORNER REFERENCED



DESCRIBE CORNER REFERENCED



STATE PLANE COORDINATE DATA

INDIANA ZONE: WEST

X _____

Y _____

ESTABLISHED BY:

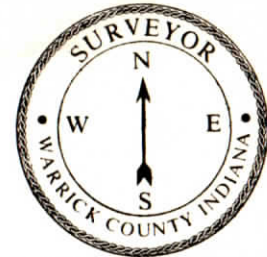
APPROVED BY Not Verified

DATE

REFERENCED BY:
Gary + Jeff

DATE
7-30-86

CORNER RECORD
WARRICK COUNTY



DESCRIPTION:

SE CORNER NE¹/₄ SW¹/₄

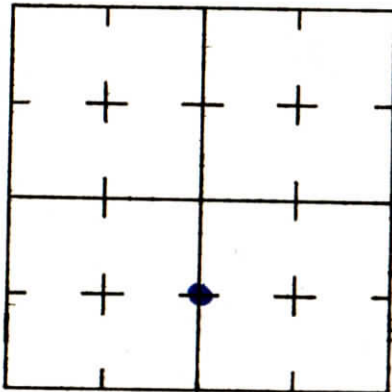
SECTION 25, T. 6 S. R. 9 W.

2nd PRINCIPLE MERIDIAN

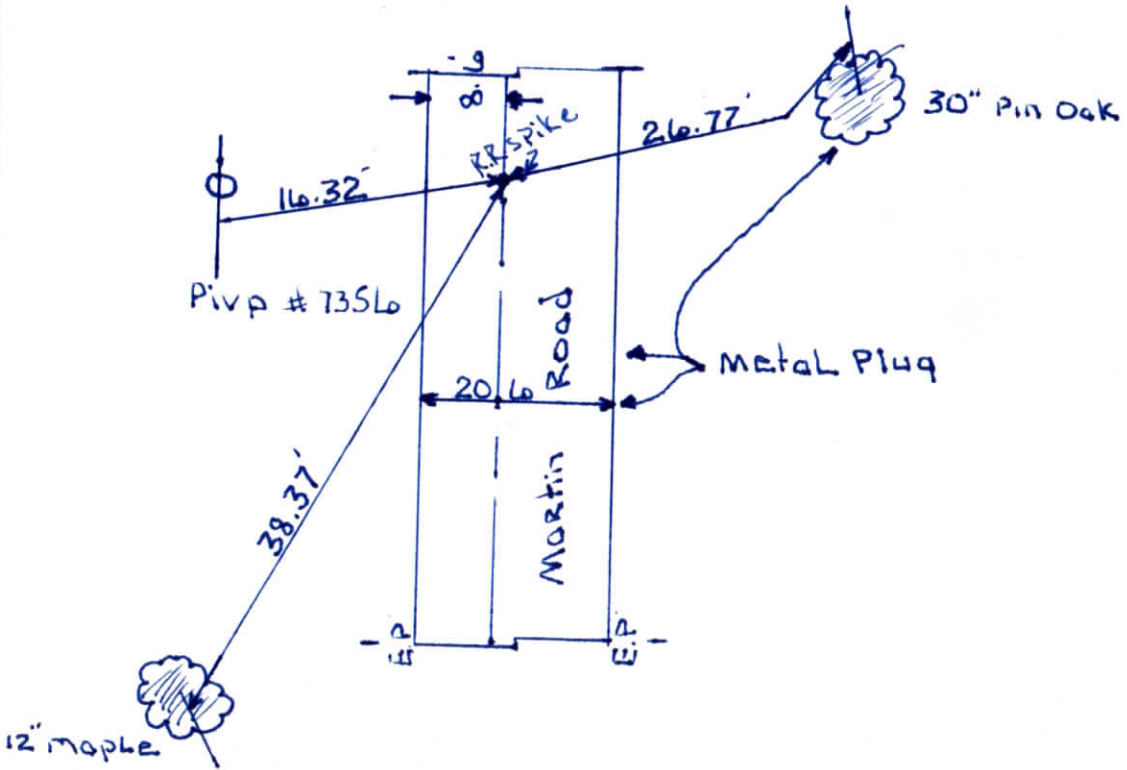
Heathervale Subdivision # 244

WARRICK COUNTY SURVEYOR
MICHAEL IRVIN

INDICATE CORNER REFERENCED



DESCRIBE CORNER REFERENCED



STATE PLANE COORDINATE DATA

INDIANA ZONE: WEST

X _____

Y _____

ESTABLISHED BY:

APPROVED BY

DATE

REFERENCED BY:

DATE

Elmo D Dockery

Dec 14, 1977

CORNER RECORD
WARRICK COUNTY

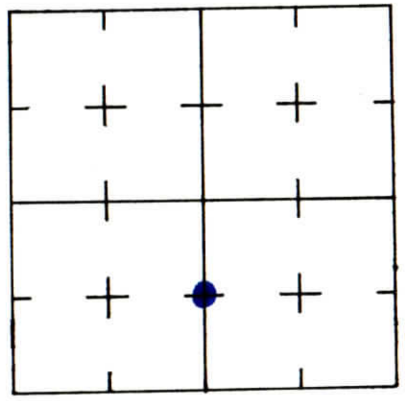


DESCRIPTION:

SE CORNER SE 1/4 N 21 1/4 SW 1/4
SECTION 25, T. 6 S. R. 9 W.
2nd PRINCIPLE MERIDIAN

WARRICK COUNTY SURVEYOR
KARAN HARGRAVE-BARNHILL

INDICATE CORNER REFERENCED



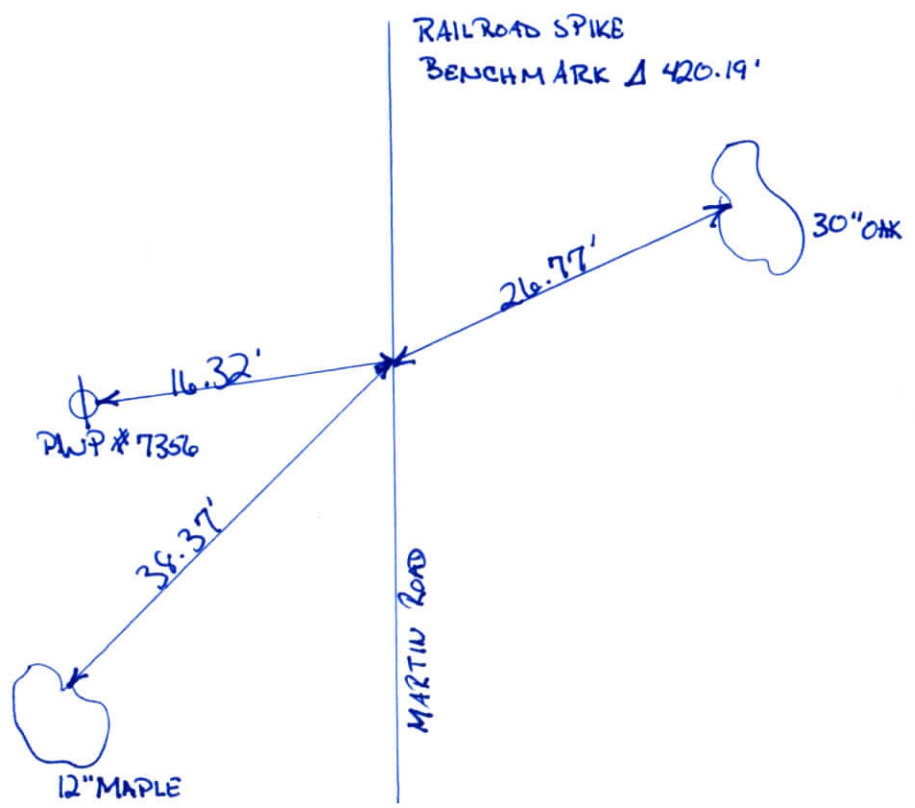
DESCRIBE CORNER REFERENCED

HEATHERVALE SUB.

STATE PLANE COORDINATE DATA
INDIANA ZONE: WEST

X _____
Y _____

ESTABLISHED BY:



APPROVED BY

DATE

REFERENCED BY:

DATE

ELMO D. DOCKERY

7-7-76

CORNER RECORD
WARRICK COUNTY



DESCRIPTION :

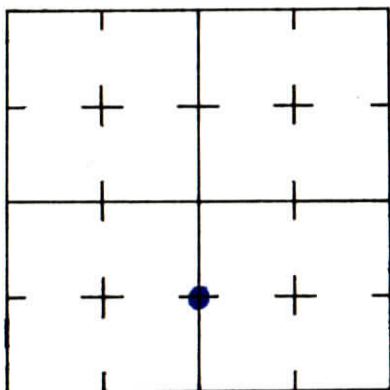
NE CORNER S/2 SW1/4

SECTION 25, T. 6 S. R. 9 W.

2nd PRINCIPLE MERIDIAN

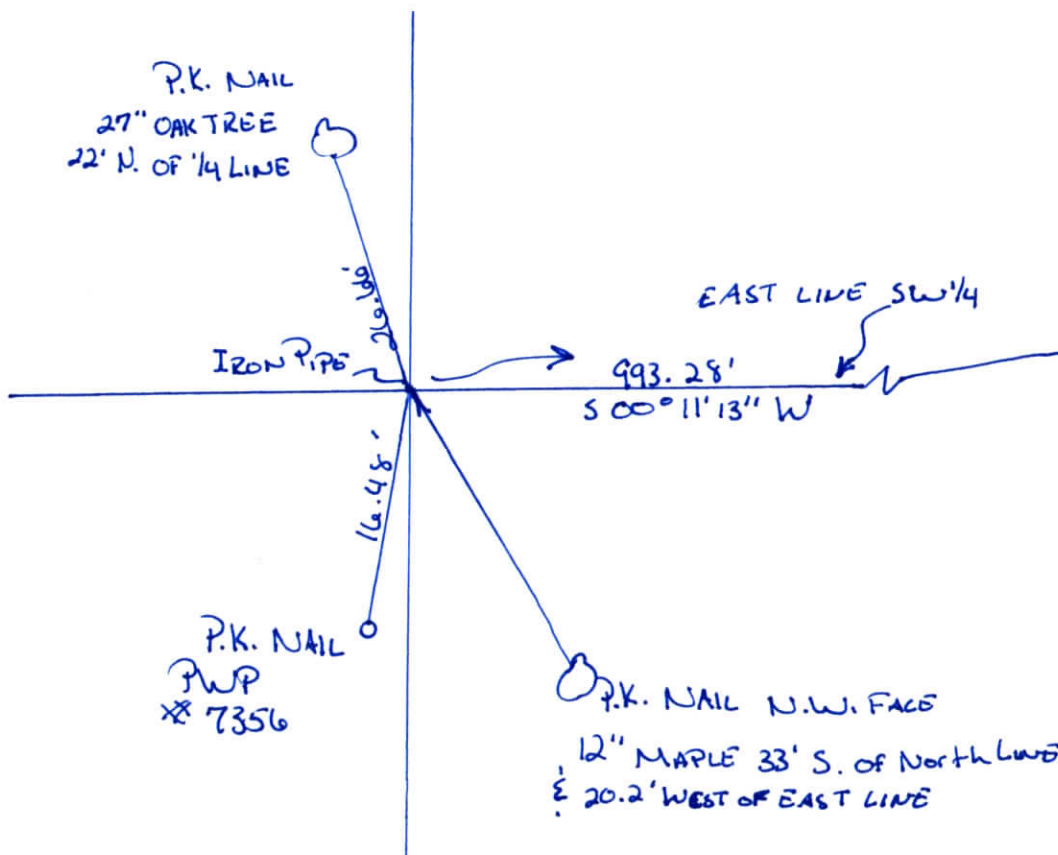
WARRICK COUNTY SURVEYOR
KARAN HARGRAVE-BARNHILL

INDICATE CORNER REFERENCED



DESCRIBE CORNER REFERENCED

HERITAGE PLACE (FIRST ADDITION)



STATE PLANE COORDINATE DATA

INDIANA ZONE: WEST

X _____

Y _____

ESTABLISHED BY:

APPROVED BY

DATE

REFERENCED BY:

DATE

SAM BIGGERSTAFF

5-29-73